

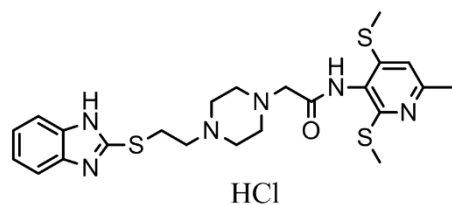
Supporting Information

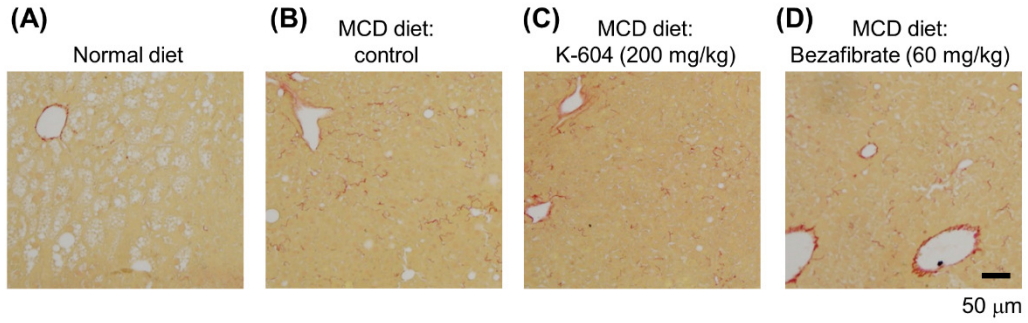
S1 Table. Animals, drugs and treatment periods.

Animals	Diet	K-604 (mg/kg)	Bezafibrate (mg/kg)	Treatment period
KK-Ay mice	MCD	30, 100, 200	60	16 weeks
Ldlr(-/-) mice	HFC	30, 100	60	16 weeks
ZF rats	Normal	100	-	12 weeks

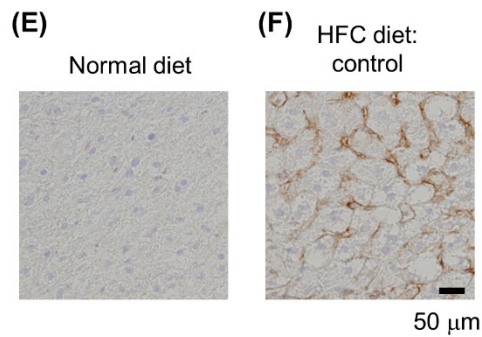
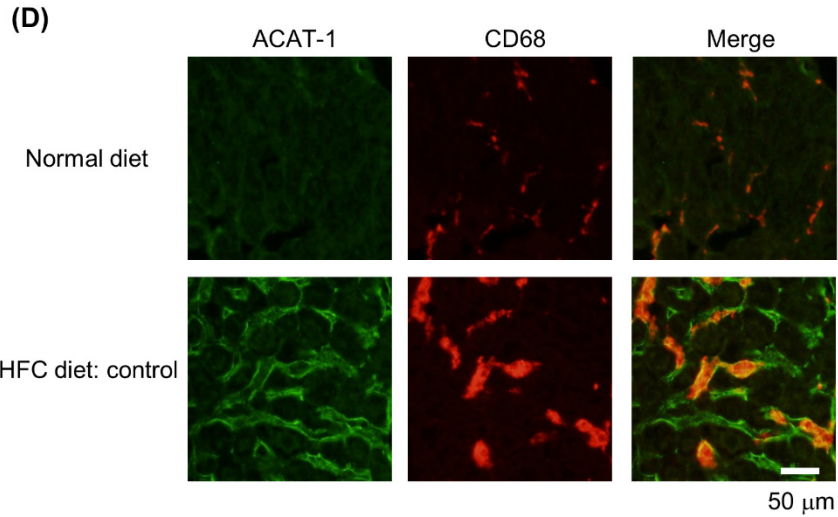
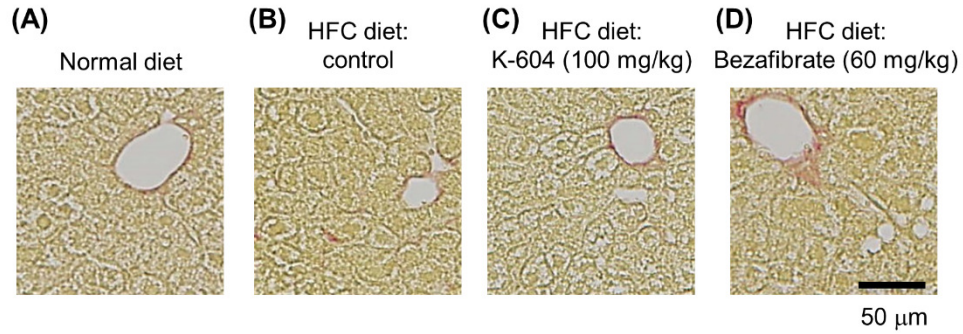
S2 Table. Primers and probes used for quantitative RT-PCR.

Gene name	Sequence
Mouse ACOX1 Fw	ACGTCTTGGATGGTAGTCCG
Mouse ACOX1 Rv	TAACGCTGGCTTCGAGTGAG
Mouse ACTB Fw	AGCCATGTACGTAGCCATCCA
Mouse ACTB Rv	TCACCGGAGTCCATCACAATG
Mouse ACTB probe	FAM-TGTCCCTGTATGCCTCTGGTCGTACCAC-TAMRA
Mouse COL1A1 Fw	GACATCCCTGAAGTCAGCTGC
Mouse COL1A1 Rv	TCCCTTGGGTCCCTCGAC
Mouse TNF- α Fw	CATCTTCTCAAAATTCGAGTGACAA
Mouse TNF- α Rv	TGGGAGTAGACAAGGTACAACCC
Rat ACOX1 Fw	CCAGAAAGGAGGGGACTTTC
Rat ACOX1 Rv	AAGTCAAAGGCATCCACCAG
Rat ACTB Fw	AGCCATGTACGTAGCCATCC
Rat ACTB Rv	ACCCTCATAGATGGGCACAG
Rat COL1A1 Fw	GAGTGAGGCCACGCATGA
Rat COL1A1 Rv	AGCCGGAGGTCCACAAAG
Rat TNF- α Fw	ATACACTGGCCCGAGGCAAC
Rat TNF- α Rv	CCACATCTCGGATCATGCTTTC

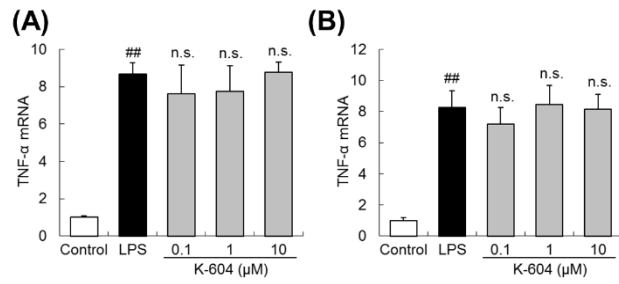
**S1 Fig. Chemical structure of K-604.** The chemical structure of K-604 is 2-[4-[2-(benzimidazol-2-ylthio)ethyl]piperazin-1-yl]-N-[2,4-bis(methylthio)-6-methylpyridin-3-yl]acetamide hydrochloride.



S2 Fig. Collagen staining in the KK-Ay mice after 16 weeks of treatment. (A-D) Picosirius red staining of the liver sections from the KK-Ay mice.



S3 Fig. ACAT-1, Kupffer cells and collagen staining in the *Ldlr*^{-/-} mice after 16 weeks of treatment. (A–D) Picrosirius red staining of the liver sections from the *Ldlr*^{-/-} mice. (E–F) Immunostaining for ACAT-1 in the liver sections from the *Ldlr*^{-/-} mice. (G) Double immunofluorescence staining for ACAT-1 and CD68 in the liver sections from the *Ldlr*^{-/-} mice.



S4 Fig. Gene expression in RAW 264.7 cells. *TNF- α* gene expression in the RAW 264.7 cells treated with LPS (10 ng/mL) for 1 h (A) or 3 h (B) ($n = 3-4$). The data are expressed as the means \pm SEM. ## $P < 0.01$ compared to the control.